



Large tail surfaces assure positive control at low speeds and great yaw and pitch stability. Electric pitch trim is standard.



Seats are high on comfort and low on weight. They also adjust fore & aft in flight and have 4 recline settings. Optional headrest shown.

RANS[®]

S-21 OUTBOUND

All metal, all purpose.



Ground Movement Handle

Cover: S-21 Outbound shown using the Titan x340 engine (180hp).





S-21 Outbound shown using the Rotax 912ULS engine (100hp).

Above: Side-by-side seating allows for large interior volume without a high drag or visibility penalty. The generous cabin width is only at the occupant's shoulder, tapering gracefully to an efficient teardrop shape.

Right: With a low instrument panel height, a skylight, and big windows, exceptional visibility is achieved.



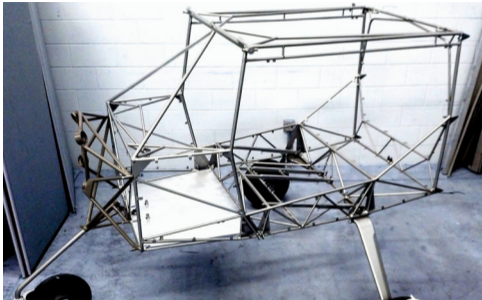
Up to 180 pounds* can be carried in the Outbound's 24 cubic foot baggage compartment. Cargo net is standard.



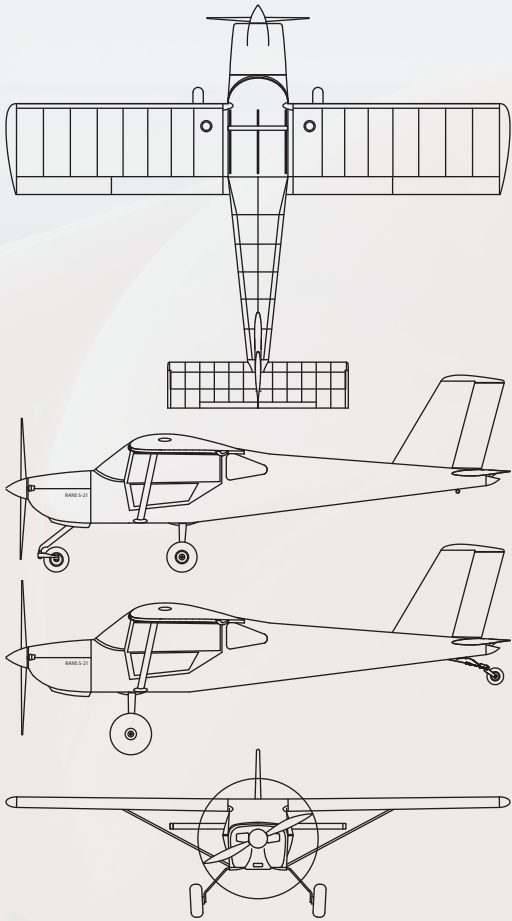
51" wide full lexan doors allow for enhanced visibility and ease of ingress-egress.



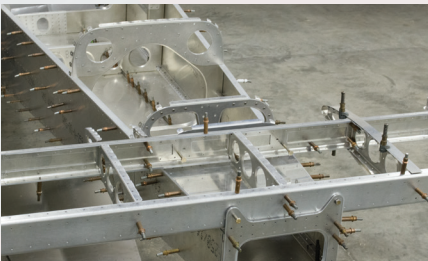
A welded steel cage comes powder coated as all steel parts, and provides fast assembly and crew safety.



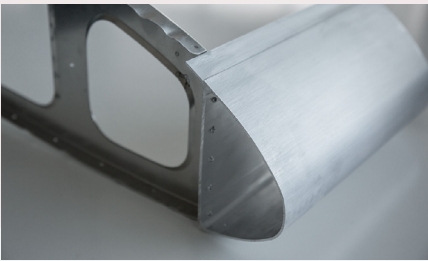
* Depending on engine choice.



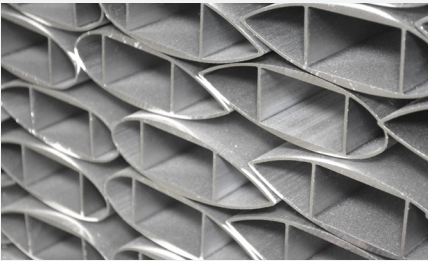
Convertible gear configuration comes standard on all S-21 Outbound airframes.



Typical Outbound construction uses CNC machining with final hole size. Most parts come de-burred and ready to cleco, check, and rivet.



Custom aluminum extruded spars make for fast assembly times.



Lift struts feature internal double webbing for extra strength.

SPECS AND PERFORMANCE

SPECIFICATIONS	ROTAX 912ULS	TITAN 340
Wing Span	28 ft.	28 ft.
Wing Area	141 sq. ft.	141 sq. ft.
MAC	5.06 ft	5.06 ft
Aspect	5.05	5.05
Length	22.41 ft.	22.41 ft.
Height Tailwheel	78"	78"
Height Trike	102.65"	102.65"
Cockpit Width	46.5 in.	46.5 in.
Headroom	42 in.	42 in.
Legroom	46 in.	46 in.
Number of Seats	2	2
Doors	2	2
Landing Gear***	F/TDTK	F/TDTK
Baggage Volume	24 cu. ft.	24 cu. ft.
Baggage Capacity	80 lbs.	180 lbs.
Fuel Capacity	43 gal. us.	43 gal. us.

POWER PLANT	ROTAX 912ULS	TITAN 340
Output	100hp	180hp
Oil Capacity	3 qt.	8 qt.
Coolant Capacity	2.5 qt.	n/a
Propeller Diameter	75 in.	80 in.
Propeller Type	Gr. Adj.	Fixed
Fuel G.P.H	5.5	7

WEIGHTS & LOADINGS	ROTAX 912ULS	TITAN 340
Gross Weight	1320 lbs. (1600 lbs.*)	1320 lbs. (1800 lbs.*)
Empty Weight	820 lbs.	985 lbs.
Useful Load	500 lbs. (780 lbs.*)	335 lbs. (815 lbs.*)
Wing Loading	9.36 lbs./ft²	13.47 lbs./ft²
Power Loading	13.2 lbs./hp	10.55 lbs./hp
Limit Loading	+6 /-2	+6 /-2

PERFORMANCE	ROTAX 912ULS	TITAN 340
Take Off Roll	350 ft.	325 ft.
Rate of Climb	850 fpm	1500 fpm
Service Ceiling	12,500 ft.	14,000 ft.
Vc	120 mph	155 mph
Vne	215 mph	215 mph
Stall Clean	46 mph	50 mph
Stall Flaps	38 mph	40 mph
Roll Rate	100°/sec	100°/sec
Glide Ratio	9.5:1	9.5:1
Landing Roll	375 ft.	375 ft.
Endurance	6.75 hrs.**	5 hrs.**
Range	852 miles	750 miles

* EAB
** Plus .5 hr. reserve
*** F/TDTK= Fixed, Convertible/ Taildragger or Trike